

# Majestic manor

BY SHERNEEN DAYARAM • PROJECT CONSULTANT DEBBIE ZEELIE  
• PROPERTY COORDINATOR WADOEDA BRENNER • PHOTOGRAPHY SHELLEY CHRISTIANS





property



Driving up the driveway of this large property, past immaculate, manicured gardens with a gently trickling water feature, against the background of the mountains of Constantia, you can't help but feel calm and relaxed. Creating the atmosphere of a French Provencal-style villa or chateau, done in an upmarket, tasteful way, the owner wanted a house that would not date, with a more traditional feel based on European design; a house with the "wow factor", and one that maximised the view of the vineyards and surrounding areas.

The location was chosen for its tranquillity, the trees, the winelands and the birdlife. "Cape Town is a beautiful city," he muses, and the property is far away from the hustle and bustle.

Based on his experience in the hotel industry, he chose to create rooms that resemble a presidential suite. From their journey through France and America, the owners have managed to hand-pick a few choice pieces of furniture. Most of the furniture is solid wood, well crafted and more traditional in style, many with ornate detail. The grandfather clock from



property

Most of the furniture is solid wood, well crafted and more traditional in style, many with ornate detail

**RIGHT:** Ambiente Luce was responsible for the beautiful chandeliers and statement lights, inside and outside the home. A Gabriella eight-arm electric chandelier was positioned over the dining table. The candle shades provide a beautiful ambient atmosphere for this room when entertaining. The Roma Grande two-tier, 16-arm chandelier is a classic style that suits this lounge perfectly.

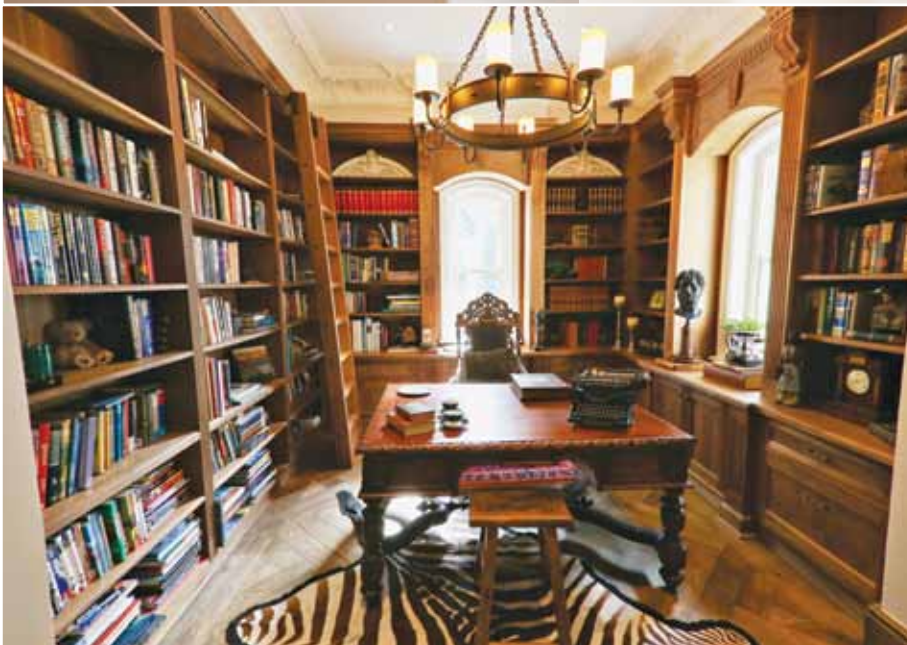


AMBIENTE LUCE 021 853 2555





THE MODERN GROUP 082 903 0941



**TOP LEFT:** The client requested simple and easy lighting control with pre-programmed "mood-lighting" scenes. C-BUS technology even switches outside lights "on" with every sunset, ensuring more advanced safety and security for the client's lifestyle. The Modern Group used Schneider C-BUS digital wall switches, which make the system very easy to use.

**OPPOSITE PAGE BELOW LEFT:** This elegant stove and versatile hob are imported exclusively by Global Pact Distributors. The Falcon Classic 110 Deluxe dual-fuel cream cooker is traditional in style, with brass trimmings (also available with chrome trimmings). Global Pact Distributors imports an exclusive range of cookers from the UK.

**OPPOSITE PAGE BELOW RIGHT:** For over 14 years Natural Stone Warehouse has specialised in the supply and installation of a large selection of fine-quality natural stone tiles and cladding, imported from around the world. Its reputation for quality and service excellence ensures an unforgettable customer experience, and, with its extensive range, you will find the perfect match for your requirements.



Zimbabwe is one of the couple's special pieces.

The owner credits his wife for the interior decorating, choosing her own furniture and accessories to create the character of the home. On the exterior, a great deal of attention has been paid to details such as precast mouldings, wall and plaster finishes.

Many of the features of the house were based on American architecture, but recreating that style was no easy task. One of the biggest



challenges was the earthworks; the house is built on a slope and on more than one level. The pool was another challenge, as was the acquisition of various finishes, such as the fireplaces, with each fireplace individually designed.

Upstairs, there are five bedrooms with en-suite bathrooms. The main bedroom features a high bed, plush carpet and ornate mirrors, giving the impression that one has stepped into a French villa. The library, with its ornate doors, stepladder leading to the shelves and pictures of the Anglo-Boer War, is the perfect place

to relax with a good book. The house also features an open-plan kitchen, dining room, lounge with double-volume area, wine cellar, home theatre, tennis courts, playroom for grandchildren, and a summer house with braai area.

The project took about two years to complete, with the home owner spending eight hours a day on site. He advises that it is important to know what you want, such as the height of the ceilings, as opposed to merely accepting what the architect designs.

GLOBAL PACT DISTRIBUTORS 021 424 9091



NATURAL STONE WAREHOUSE 021 506 1300





VICTORIAN BATHROOMS 021 761 4850



PLANTATION SHUTTERS 021 577 1705



**TOP LEFT:** The Bateau bath from Victorian Bathrooms was selected for the main en suite due to its refined elegance and spacious interior. As a specialist supplier of exclusive bathroomware in the classic style, Victorian Bathrooms was the perfect partner for this project. The Bateau bath is available with a white exterior, or finished in a metal such as polished pewter or aged copper.

**ABOVE LEFT:** To complement the design of this nursery, Plantation Shutters' shutters, in Satin White, were manufactured from solid timber and installed by highly skilled installation teams. Plantation Shutters specialises in the design, manufacture and installation of locally crafted, custom-designed adjustable louvre Plantation Timber and Plantation Security Shutters, for indoor and outdoor use.



Getting good builders is another good piece of advice. This process is time-consuming and one has to be involved at every stage, he says. 🏠

**CONTACT:**

**AMBIENTE LUCE** – light fittings

021 853 2555, [www.ambienteluce.com](http://www.ambienteluce.com)

**GLOBAL PACT DISTRIBUTORS** – range cookers

021 424 9091, 0861 407 007, [info@globalpact.co.za](mailto:info@globalpact.co.za)

**NATURAL STONE WAREHOUSE** – natural stone products

021 506 1300, 011 704 6827, [www.naturalstonewarehouse.com](http://www.naturalstonewarehouse.com)

**PLANTATION SHUTTERS** – adjustable louvre shutters

021 577 1705, [info@plantation.co.za](mailto:info@plantation.co.za), [www.plantation.co.za](http://www.plantation.co.za)

**THE MODERN GROUP** – home automation

021 551 4564, [heidi@modgroup.co.za](mailto:heidi@modgroup.co.za)

**VICTORIAN BATHROOMS** – classic-styled sanitaryware

021 761 4850, [info@victorianbathrooms.co.za](mailto:info@victorianbathrooms.co.za),

[www.victorianbathrooms.co.za](http://www.victorianbathrooms.co.za)